

Hydraulic

JKAL

Utility
model
under
application

PC60~450

*Speedy attachment change
Innovative attachment changer*



*All kinds of attachments can be
mounted or removed quickly
from the operator's seat*

MUROTO

Attachments can be mounted and removed using a hydraulic mechanism

Features

Safe

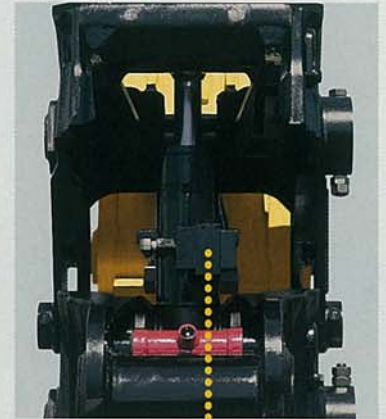
Double safety mechanism consisting of a pilot check valve, automatically lock stopper.

Simple

Attachments can be changed easily and quickly from the driver's seat without modification.

Light and Strong

Two-piece housing structure and high-tension steel make the unit light and very durable.



Pilot Check Valve

(The pilot check valve locks the cylinder in case the hose is broken.)

Easy mounting! Procedure



1 Set the both switch on the switch box to CLOSE. (Buzzer sounds, Red lamp illuminates)



2 Hook the arm claw of the JKAL onto the pin of the attachment.



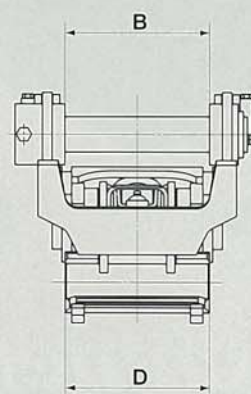
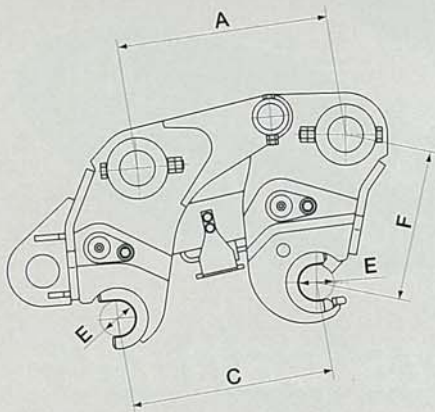
3 Push the bucket cylinder to engage the arm claw with the link claw.



4 Set the both switch to OPEN and extend the LOCK cylinder to set it.



5 The pin is holding with the stopper to complete the procedure.



This drawing is JKAL205-2.

Model	JKAL65-2	JKAL105-2	JKAL165-2	JKAL205-2	JKAL305-2	JKAL405-2
Dimensions A (mm)	312~338	384~412	427~455	460~493	500~536	557~592
B	202	261	311.5	326.5	346	372
C	247~364	375~500	401~528	458~570	514~674	537~690
D	198	258	310	325	345	370
E	φ50	φ60	φ70	φ80	φ90	φ100
F	245	280	331	340	392	435
Weight*(kg)	90	175	225	295	435	630
Appropriate model	PC60~PC90	PC100~PC130	PC150~PC160	PC200~PC230	PC300~PC350	PC400~PC450

*Pins are not included.

*1:The above is subject to technical alteration without prior notice.

*2:Other manufacturers' attachments are acceptable.

Remark: When JKAL is mounted, the attachment may interfere with a boom or cabin.